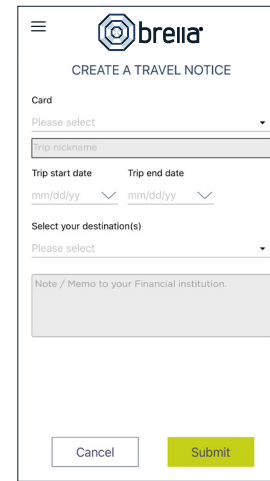
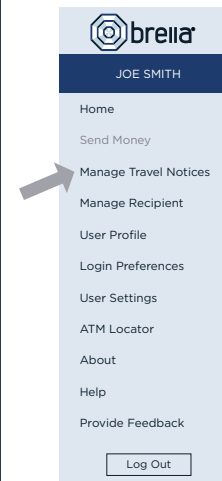


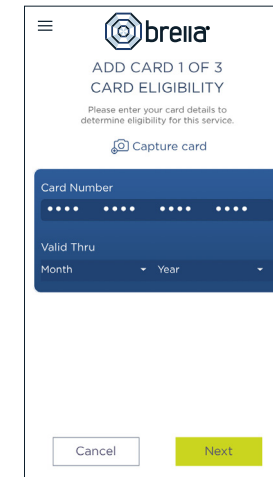
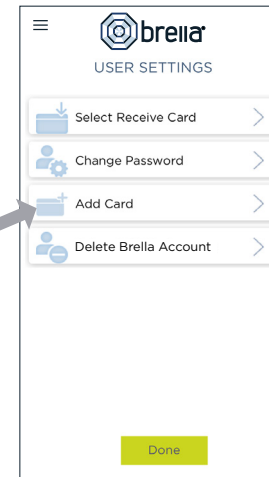
USER PREFERENCES

- Tap **User Profile** on the Menu screen to manage your personal information
- Tap **Login Preferences** on the Menu screen to enable Quick Balance, Remember Me and fingerprint access
- Tap **User Settings** on the Menu screen to change your password, add/delete a card or select a Receive Card
 - Tap **Select Receive Card** to choose a card to receive money from other users
 - The money bag icon indicates your selected receive card



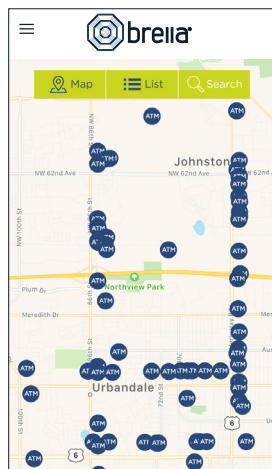
SUBMIT TRAVEL NOTICE

- Tap **Manage Travel Notices** on the Menu screen
- Select a card and provide your travel details



ADDING A CARD

- Tap **Add Card** from the Cards & Accounts or User Settings screen
- Follow the same prompts to register the card
- Review and accept the terms and conditions and verify the card



ATM LOCATOR

- Tap **ATM Locator** on the Sign In or Menu screen to find the nearest ATM
- If GPS Location Services is enabled, the locator will pinpoint your location
- Tap **Search** icon to find a location

Note: Passwords must contain at least one capital letter, one lowercase letter, one number, one special character (!, @, #, \$, %, &, or *) and be 5 to 32 characters in length. You're required to change your password once a year.